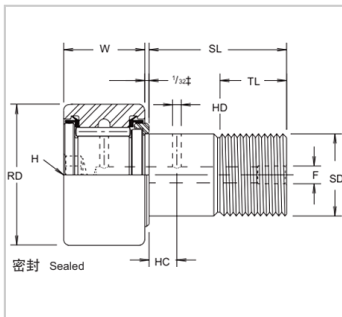


Stud Type Track Rollers

CCFH-SB Series-**CCFH-1 5/8-SB**

参数信息:



Bearing model :	CCFH-1 5/8-SB
external diameter :	1.625
width :	.875
Shaft diameter :	.875
Shaft length :	1 1/2
Minimum thread length :	3/4
Pitch :	7/8-14
Oil hole :	
HC :	3/8
HD :	3/32
Grease nipple :	3/16
Recommended tightening torque :	1500
Dynamic load :	11280
static load :	4840

: